

# ICARUS

DIECI ICARUS TELEHANDLER 4 T / 16.6 M



40.17

**DIECI**  
**AUSTRALIA**

PERFORMANCE

|  |                      |
|--|----------------------|
| Machine model  | ICARUS 40.17         |
| Maximum capacity   | 4000 kg (8818 lb)    |
| Maximum lifting height on stablisers                           | 16.60 m (54.5 ft)    |
| Maximum horizontal extension on stablisers                     | 12.80 m (42 ft)      |
| Fork swiveling angle   | 134°                 |
| Pull-out force   | 5700 daN (12814 lbf) |
| Towing force   | 7300 daN (16411 lbf) |
| Maximum climb angle  | 40%                  |
| Unladen weight   | 12260 kg (27029 lb)  |
| Max speed (referred to wheels with maximum permitted diameter) | 35 km/h (21.7 mph)   |

BOOM

|                        |              |
|------------------------|--------------|
| Machine model          | ICARUS 40.17 |
| Lifting                | 14.1 s       |
| Getting off the basket | 10.2 s       |
| Extension              | 21.4 s       |
| Retraction             | 14.1 s       |
| Forward swiveling      | 3.3 s        |
| Reverse swiveling      | 2.1 s        |

ENGINE

|                                     |                               |
|-------------------------------------|-------------------------------|
| Machine model                       | ICARUS 40.17                  |
| Brand                               | FPT                           |
| Nominal power                       | 93 kW (125 HP)                |
| @rpm                                | 2200 rpm                      |
| Operation                           | 4-stroke                      |
| Injection                           | Mechanical direct             |
| Number and arrangement of cylinders | 4, Vertical in line           |
| Displacement                        | 4485 cm³ (274 in³)            |
| Consumption                         | 230 g/kWh (378.35 lb/Hp h)    |
| @rpm                                | 2200 rpm                      |
| Emission standards                  | Stage IIIA/Tier 3             |
| Cooling system                      | Liquid                        |
| Intake                              | Turbo compressor after-cooler |

DIFFERENTIAL AXLES

|                  |   |
|------------------|---|
| Machine model    | ICARUS 40.17  |
| Axles types      | 2 steering, with 4 planetary reduction gears                                  |
| Type of steering | 4 wheels / transversal / 2 wheels   |
| Front axle       | Rigid (Leveling upon request)   |
| Rear axle        | Swinging  |
| Service brake    | Oil bath with servo brake on front and rear axle with double hydraulic system |
| Park brake       | Automatic spring applied hydraulic release                                    |

HYDRAULIC SYSTEM

|                         |  |
|-------------------------|--|
| Machine model           | ICARUS 40.17                               |
| Hydraulic pump type     | Gear pump for power steering and movements |
| Hydraulic pump capacity | 130 L/min (34.3 gal/min)                   |
| Max. operating pressure | 25.0 MPa (3626 psi)                        |
| Distributor control     | 4in1 proportional Joystick                 |

REFUELING

|                         |                     |
|-------------------------|---------------------|
| Machine model           | ICARUS 40.17        |
| Hydraulic motor (total) | 174.0 L (45.97 gal) |
| Diesel tank             | 105.0 L (27.74 gal) |

TRANSMISSION

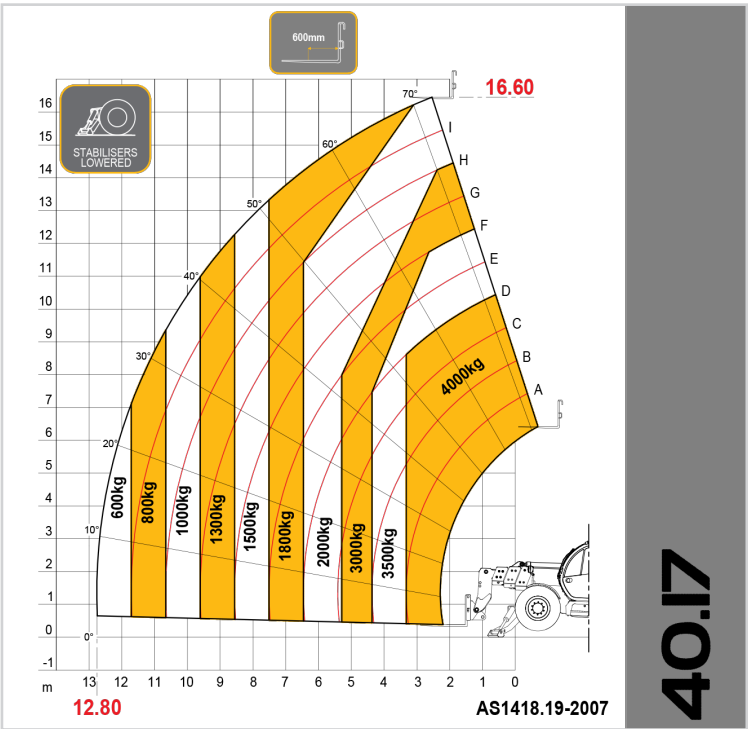
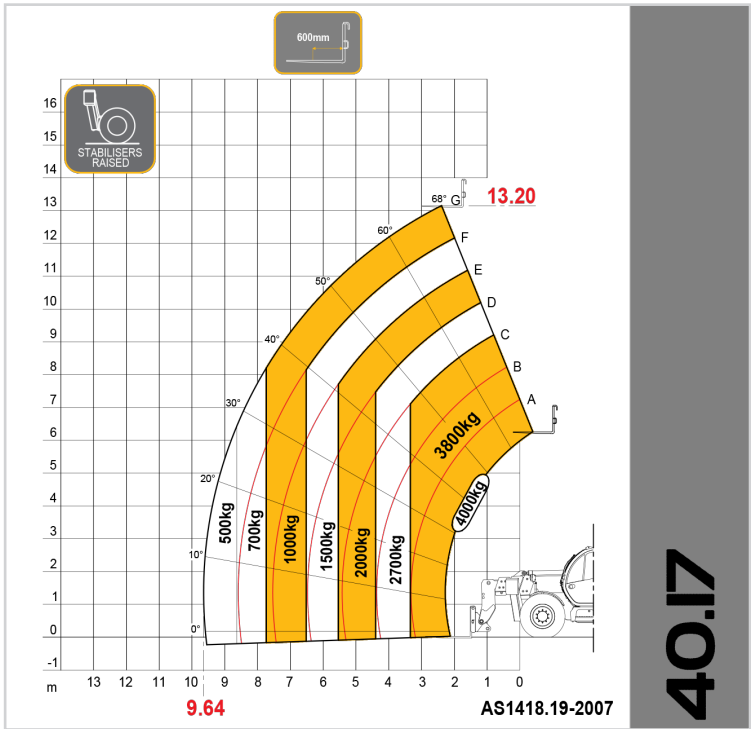
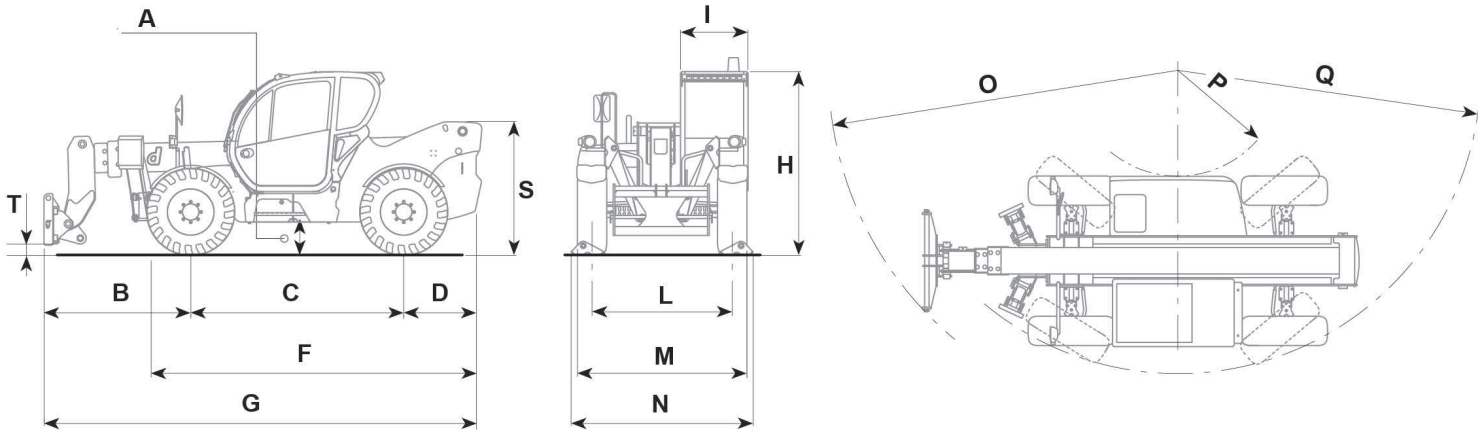
|                      |  |
|----------------------|--|
| Machine model        | ICARUS 40.17   |
| Transmission type    | Hydrostatic with variable flow pump                  |
| Hydraulic motor      | Hydrostatic with continuous automatic adjustment     |
| Reversal             | Electro-Hydraulic                                    |
| Inching              | With hydraulic pedal for controlled forward movement |
| Transmission gearbox | Servocontrolled 2-speed                              |

TYRES

|                |              |
|----------------|--------------|
| Machine model  | ICARUS 40.17 |
| Standard tyres | 18x22.5"     |

DIMENSIONS

|               |                    |
|---------------|--------------------|
| Machine model | ICARUS 40.17       |
| A             | 390 mm (15.4 in)   |
| B             | 1970 mm (77.6 in)  |
| C             | 2950 mm (116.1 in) |
| D             | 1355 mm (53.3 in)  |
| F             | 4900 mm (192.9 in) |
| G             | 6275 mm (247 in)   |
| H             | 2550 mm (100.4 in) |
| I             | 940 mm (37 in)     |
| L             | 1950 mm (76.8 in)  |
| M             | 2360 mm (92.9 in)  |
| N             | 3270 mm (128.7 in) |
| O             | 4900 mm (173.2 in) |
| P             | 1700 mm (66.9 in)  |
| Q             | 4400 mm (173.2 in) |
| S             | 1837 mm (72.3 in)  |
| T             | 163 mm (6.4 in)    |





Distributed by Dieci Australia and their network of authorised dealers.

25 Garner Place, Ingleburn NSW 2565  
[www.dieciaustralia.com.au](http://www.dieciaustralia.com.au) | [info@dieciaustralia.com.au](mailto:info@dieciaustralia.com.au)  
Tel. +61 2 8795 4555

Illustrations and photos show the standard international models and may or may not include optional equipment, accessories, customer installed or modified parts, optional parts and all standard equipment with some differences in colour and features. Machine specifications are subject to change without notice and additional load charts and machine or attachment specifications may be available on request. Please refer to the operators manual for correct machine and attachment operation.

Printed in Australia SKT Icarus EXTRA-EC-AU | 1.6 2019